

# Stop the Compressor Station Expansions

**Brookfield & Milford, CT**

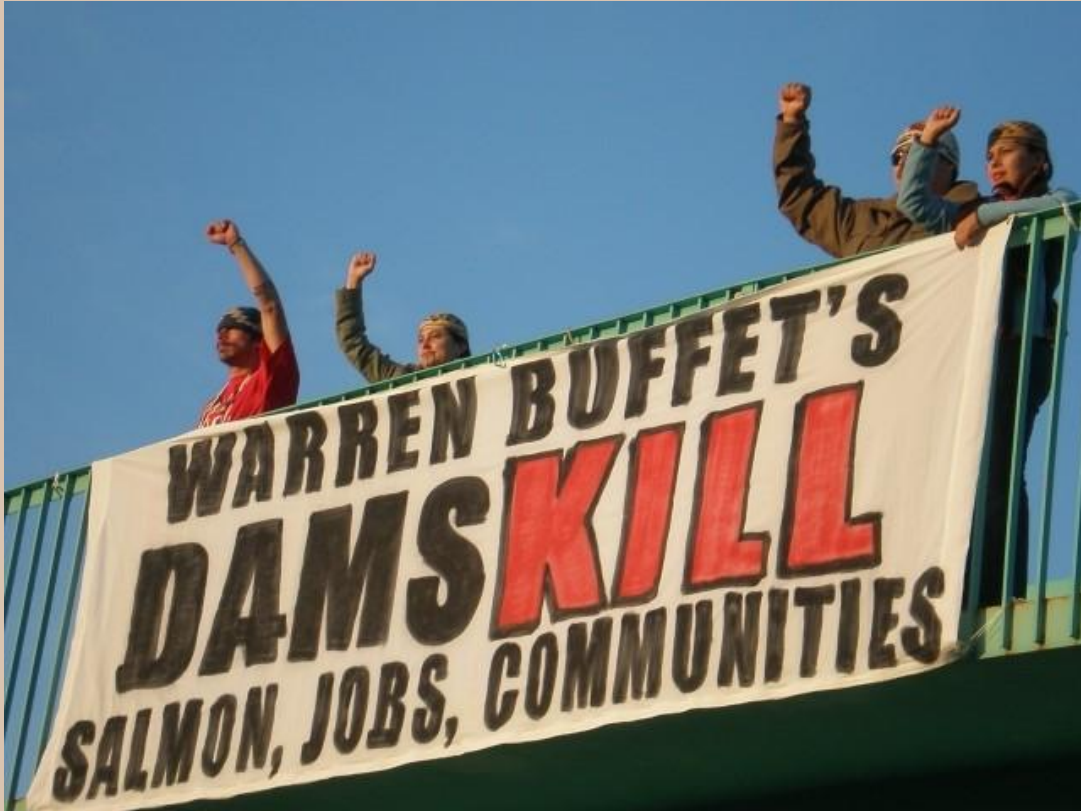
# Agenda

- What's in a name?
- Reviewing the compressor station expansion project, it's history, impacts, and current status
- Hearing from Fore River Residents Against the Compressor Station about their campaign in Weymouth, MA
- Efforts in New York to stop the compressor station expansions
- Action items and next steps!

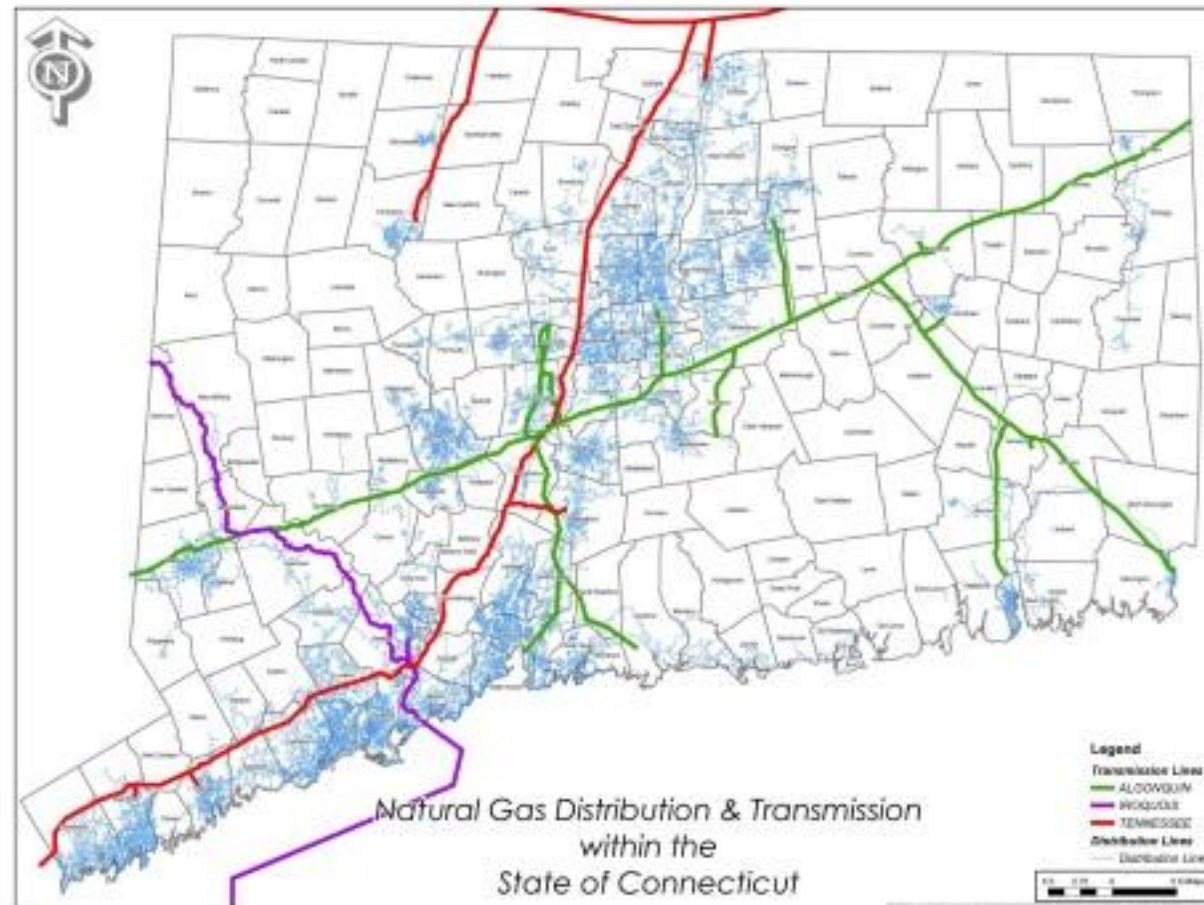
**What's in a name?**

**~~Iroquois~~ Pipeline**

Indigenous people have been organizing to stop TC Energy & Berkshire Hathaway's violence for years!



Fossil Fuel companies often co-opt Indigenous words for their toxic and polluting projects as a grotesque way to brand them as something positive.



**But we don't have to listen to the fossil fuel companies!**

**So let's call it the TC Energy /  
Berkshire Hathaway Pipeline!**

# The TC Energy / Berkshire Hathaway Pipeline Project





# A pipeline with a corrupt and dangerous history

FOR IMMEDIATE RELEASE  
THURSDAY, MAY 23, 1996

ENR  
(202) 616-2771  
TDD (202) 514-1888

## BUILDER OF VAST NORTHEASTERN GAS PIPELINE PLEADS GUILTY, WILL PAY \$22 MILLION IN CRIMINAL AND CIVIL FINES

### Environmental Fine Second Only To Exxon Valdez

WASHINGTON, D.C. -- In the largest penalty in an environmental case since the 1989 Exxon Valdez oil spill, the Connecticut-based Iroquois Pipeline Operating Company will pay \$22 million in criminal and civil fines for violating federal environmental and safety laws, the United States announced today. The violations stem from the construction of one of the country's longest natural gas pipelines running 370 miles from Canada through upstate New York and Connecticut to Long Island.

The company and four of its high-level officers and supervisors pleaded guilty today to numerous criminal violations of the Clean Water Act including failure to clean up or restore damage to nearly 200 streams and wetlands as a result of rushing to meet construction deadlines.



# Where is the gas for this pipeline coming from?

## Fracking & Tar Sands



# Who's buying the Gas?

- National Grid and Con Edison
- To be used for home heating in New York - despite the State's statement goals and plans to decarbonize
- Concerns that it could actually be for export

# Impacts of Compressor Stations

- They emit dangerous toxins like VOCs, Formaldehyde, and NOX
- They can make a lot of noise (especially during “blow downs”)
- Emit greenhouse gas emissions and contribute to global climate change
- There is harm through the entire process of extraction, pipeline delivery, and point of consumption.



# Most Prevalent Medical Conditions In Individuals Living in Close Proximity to Compressor Stations and Metering Stations

---

Medical Conditions:	% of Individuals (71)
Respiratory Impacts	58
Throat Irritation	55
Weakness and Fatigue	55
Nasal Irritation	55
Muscle Aches & Pains	52
Vision Impairment	48
Sleep Disturbances	45
Sinus Problems	42
Allergies	42
Eye Irritation	42
Joint Pain	39
Breathing Difficulties	39
Severe Headaches	39
Swollen & Painful Joints	32
Frequent irritation	32



# The Brookfield Compressor Station





# The Brookfield Compressor Station

- Currently has 18,000 horsepower capacity, TC Energy and Berkshire Hathaway want to add an additional 24,000 horsepower capacity.
- Residents nearby report the smell of gas coming from the facility.
- Construction would take several months to complete with 100-160 workers working 7am-7pm six days a week.
- The compressor station is 1/3 of a mile away from a middle school
- The compressor station lays at the intersection of the TC Energy / Berkshire Hathaway and Enbridge pipelines - and can switch gas between them.

# The Milford Compressor Station



# The Milford Compressor Station

- Currently has 20,620 horsepower capacity
- TC Energy and Berkshire Hathaway want to add more cooling capacity to the facility
- In February 2020 a conditional Coastal Site Plan was approved by Milford.

# Permit Status

- The pipeline received their permit from the Federal Energy Regulatory Commission (FERC) in March 2022, despite objections from the EPA.
- New York State Department of Environmental Conservation is reviewing air permits for the compressor station expansions there. A final decision is expected in April.

# Permit Status in CT

- The Connecticut Department of Energy & Environmental Protection (DEEP) has been reviewing an application for a “minor source” air permit for the Brookfield compressor station expansion.
- Berkshire Hathaway and TC Energy are trying to keep the projected emissions right below the threshold that would trigger the need for a “major source” permit.
- Wastewater discharge permits may have already been approved.

# If DEEP issues a draft permit for Brookfield...

- There will be a 30 day public comment period. Residents can ask for an extensions of the comment period.
- Within 30 days a public hearing may be requested by local residents.
- A final decision could take several months.



# How can we win?

***Delay, delay, delay!***

***Get the NY and CT to reject the air permits!***

***It will take a multitude of strategies and tactics!***

***This is a long term struggle!***



**Stop GTN XPress**





# Fore River Residents Against the Compressor Station (FRRACS)









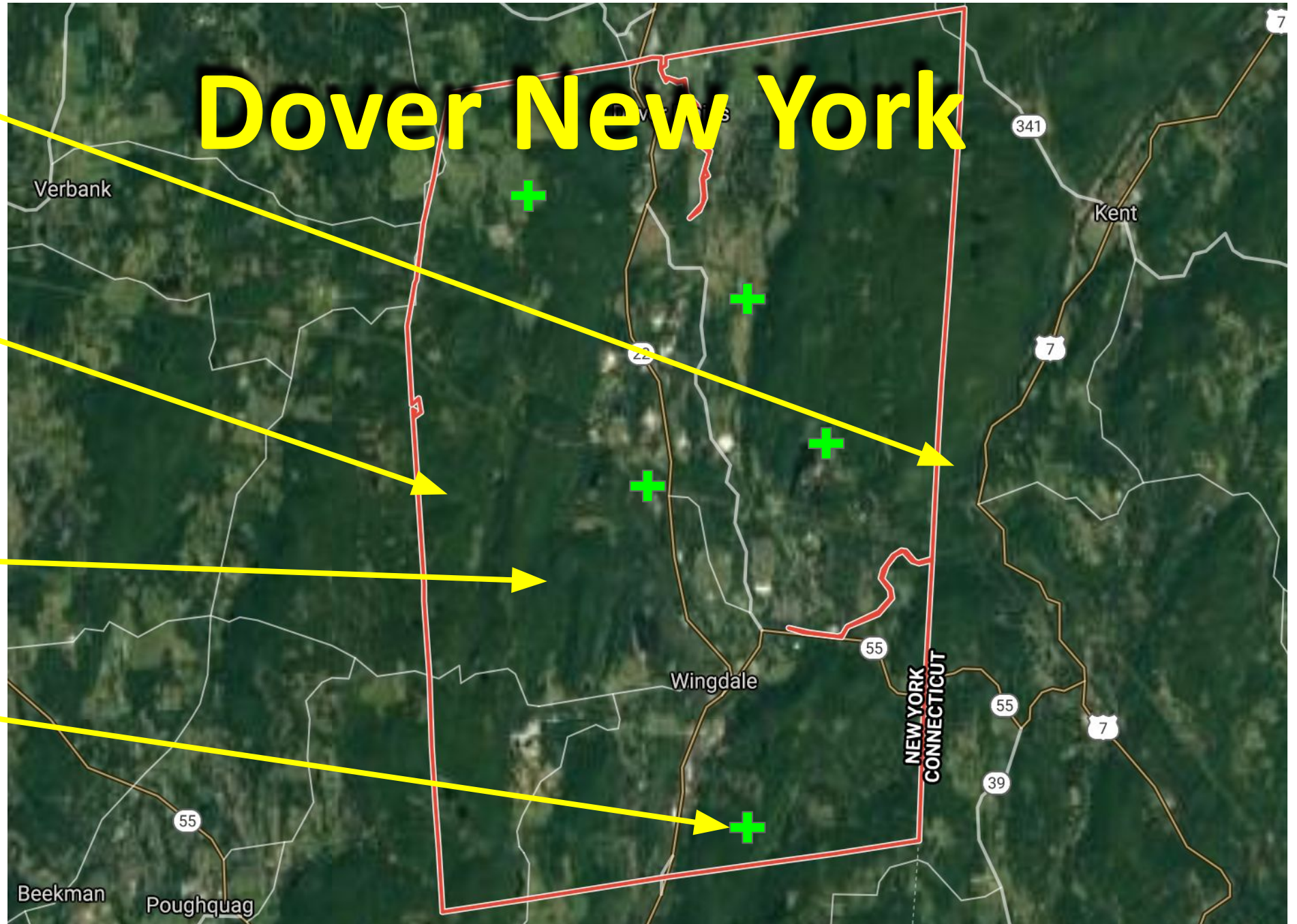
# Dover New York

Schaghticoke  
Indigenous  
lands

Old Growth  
Hemlock Forest

Great Swamp  
Largest Freshwater  
Wetlands in NYS

Regional  
organic small  
farms

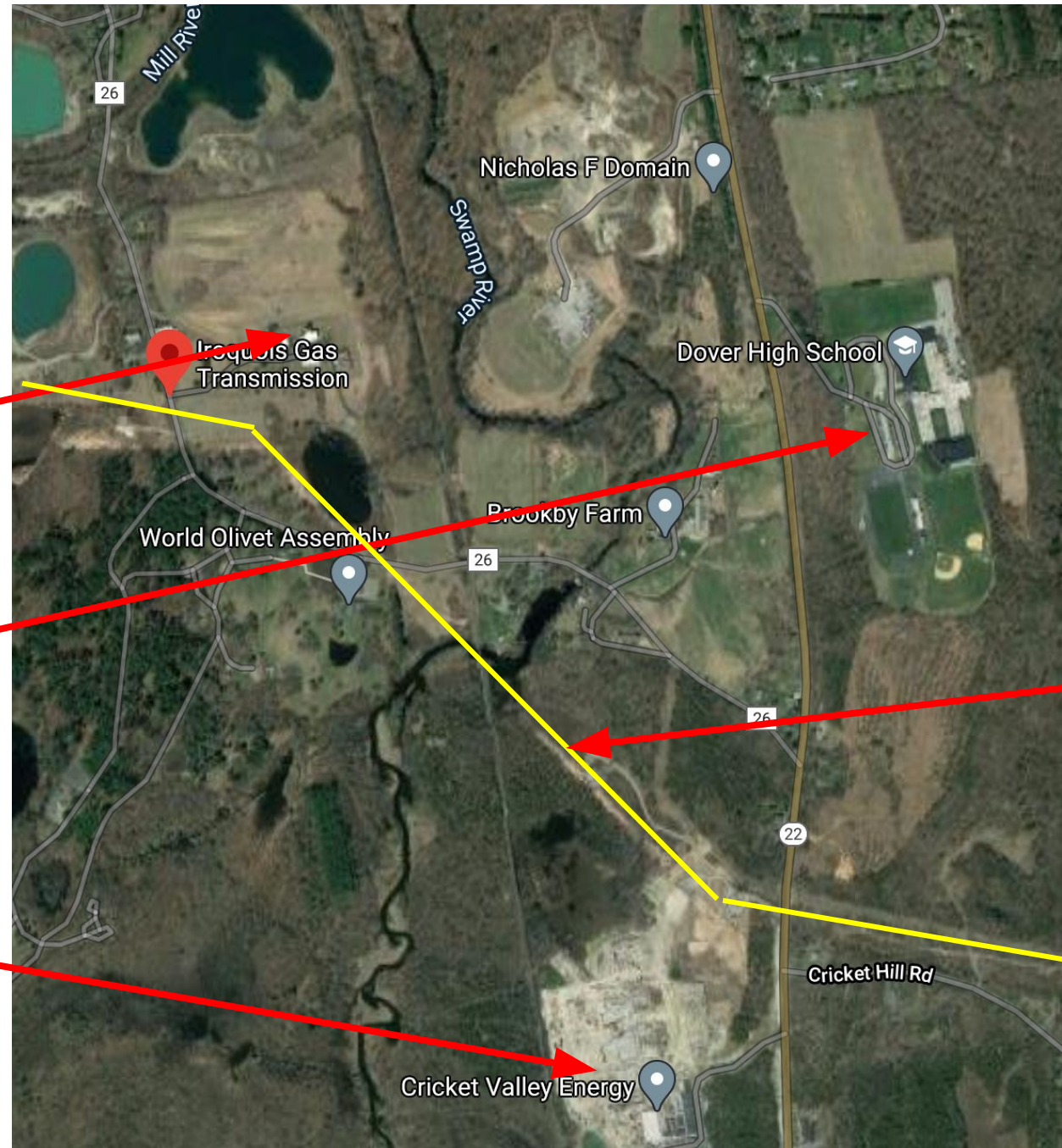




Dover  
Compressor  
Station

Dover Middle  
School & High  
School

Cricket Valley  
Energy



Compressed  
Gas  
Pipeline

1000 FT



# Cricket Valley Energy Center

**Location: Dover NY**

**Greenhouse-gas emissions: 6 million tons/year**

**Pollutants: ozone, nitrous oxides, VOCs, PM2.5**

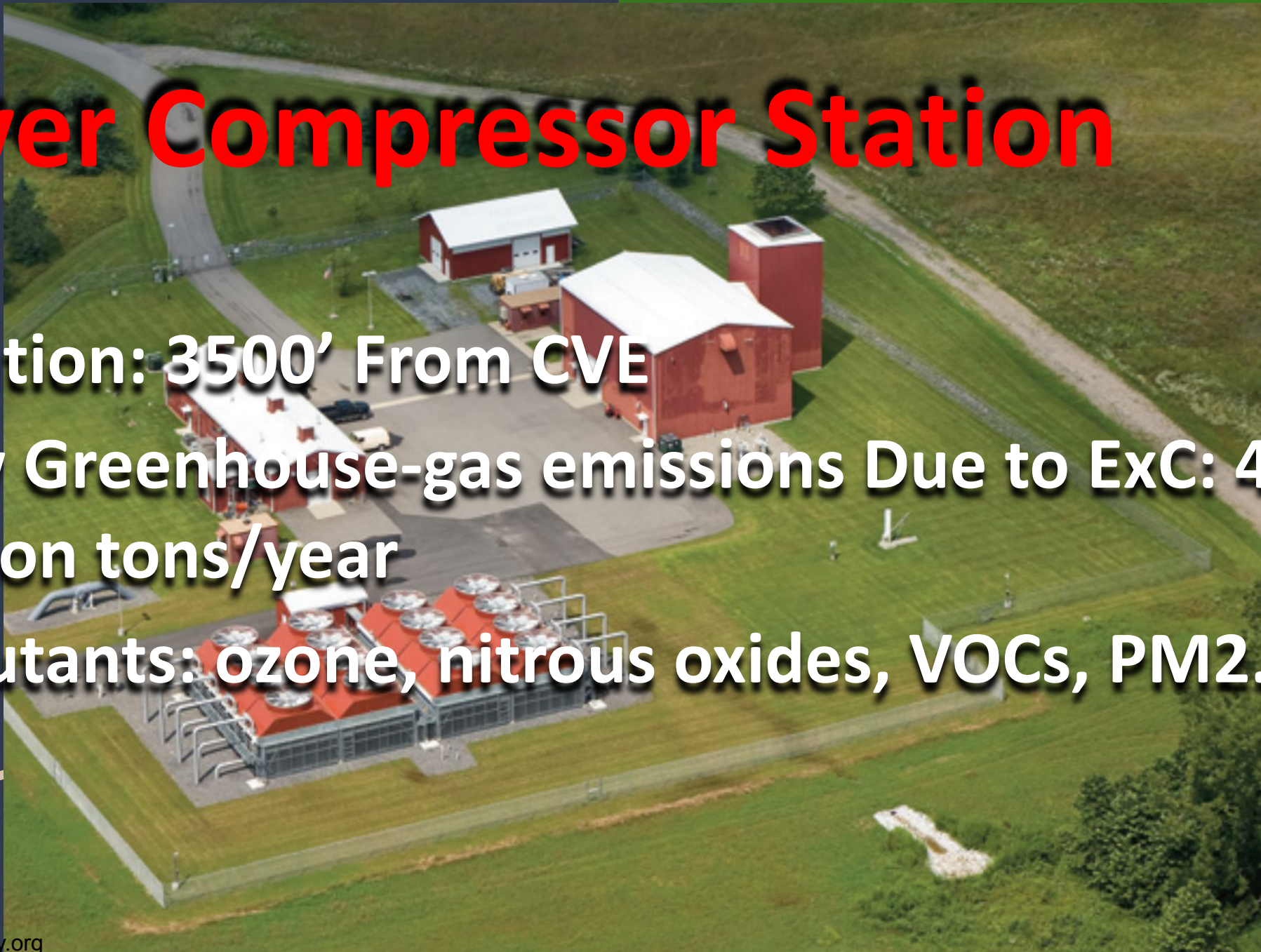


# Dover Compressor Station

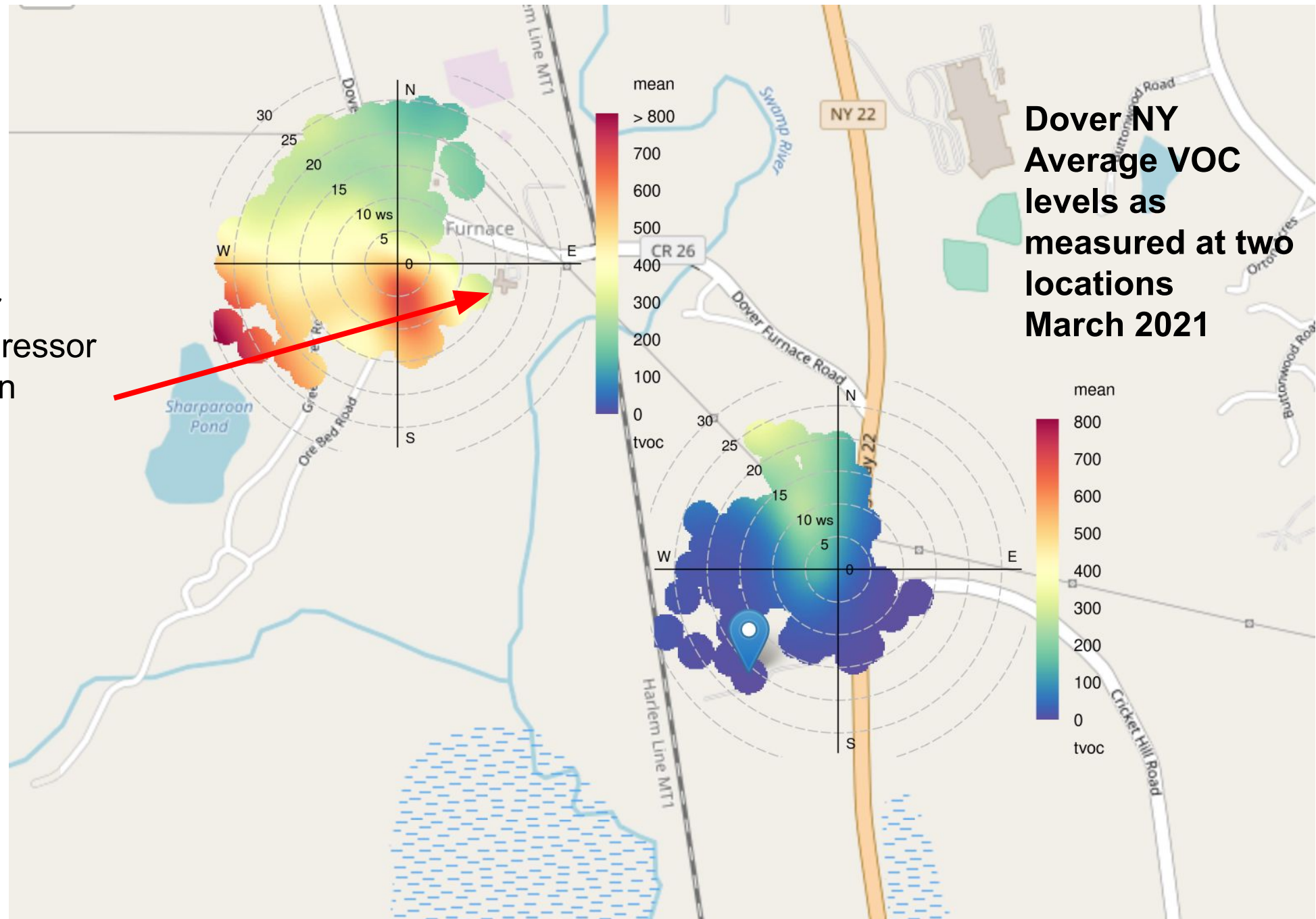
Location: 3500' From CVE

New Greenhouse-gas emissions Due to ExC: 4-7 million tons/year

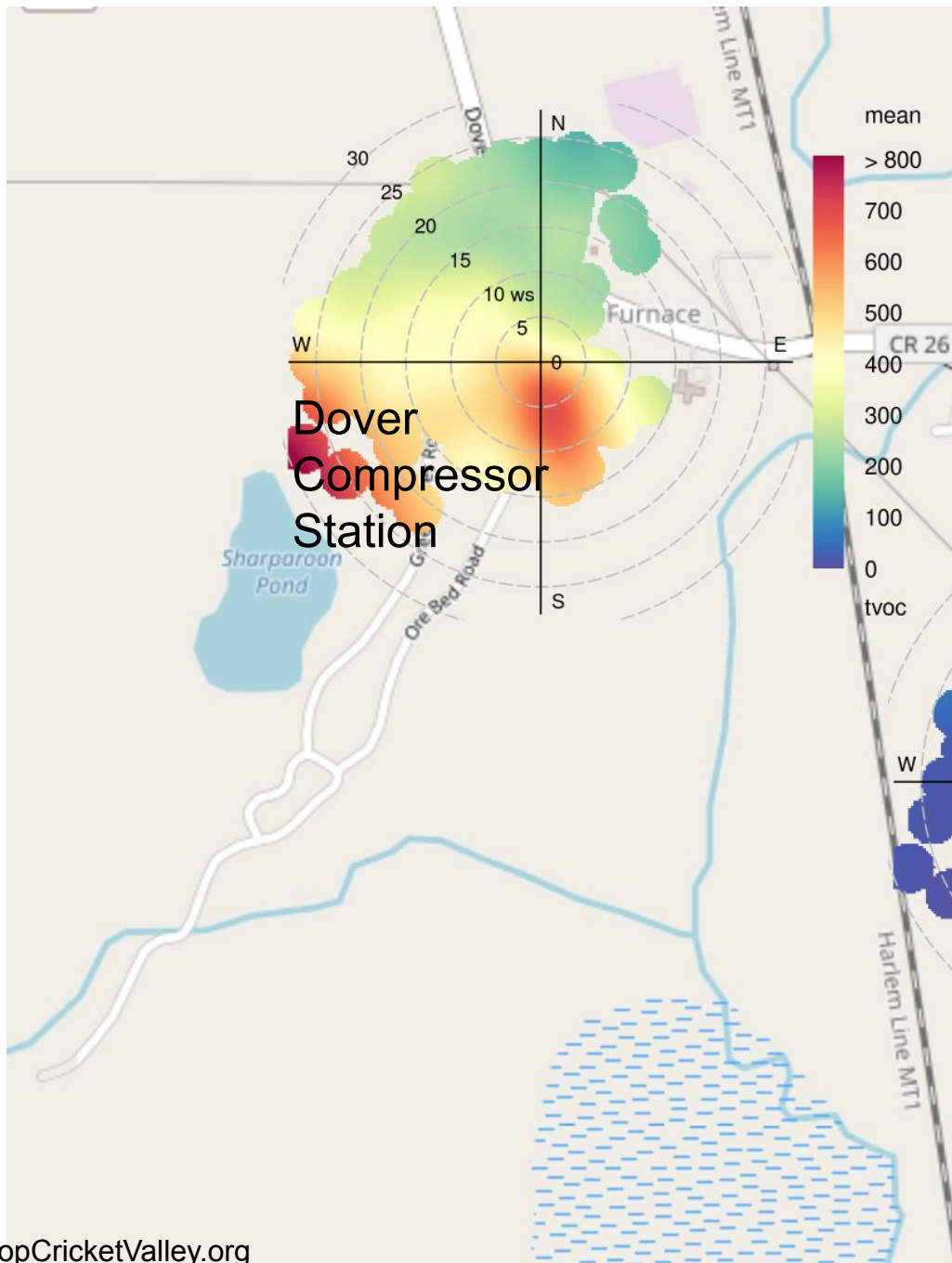
Pollutants: ozone, nitrous oxides, VOCs, PM2.5



Dover  
Compressor  
Station







Daily AQI Color	Levels of Concern	ug/m <sup>3</sup> Break Points (24-hour average)	Description of Air Quality
Green	Good	0 – 12	Air quality is considered satisfactory, and air pollution poses little or no risk.
Yellow	Moderate	12 – 35	Air quality is acceptable; however, for some pollutants there may be a moderate health concern for a very small number of people.
Orange	Unhealthy for Sensitive Groups	35 – 55	Although the general public is not likely to be affected at this AQI range, people with lung disease, older adults, and children are at greater risk from the presence of particles in the air.
Red	Unhealthy	55 - 150	Everyone may begin to experience some adverse health effects, and members of the sensitive groups may experience more adverse health effects.
Purple	Very Unhealthy	150 - 250	This would trigger a health alert signifying that everyone may experience more serious health effects.
Maroon	Hazardous	250 - 500	This would trigger a health warning of emergency conditions. The entire population is more likely to be affected.









© ERIK McGREGOR - 2019  
erikrivas@hotmail.com



# Actions you can take right now!

Email Connecticut Governor Ned Lamont: [governor.lamont@ct.gov](mailto:governor.lamont@ct.gov)

Urge him to:

- Reject the air permit application for the Brookfield Compressor Station
- Publicly oppose the project



# Actions you can take right now!

Email Katie Dykes, the  
Commissioner of DEEP:  
[katie.dykes@ct.gov](mailto:katie.dykes@ct.gov)

Urge her to:

- Reject the air permit for the Brookfield compressor station on the basis that it should be a *major* air source permit application.
- Visit Brookfield and meet with community members.



# Contact Info

---

- Nick Katkevich, [nick.katkevich@sierraclub.org](mailto:nick.katkevich@sierraclub.org)
- Samantha Dynowski, [samantha.dynowski@sierraclub.org](mailto:samantha.dynowski@sierraclub.org)